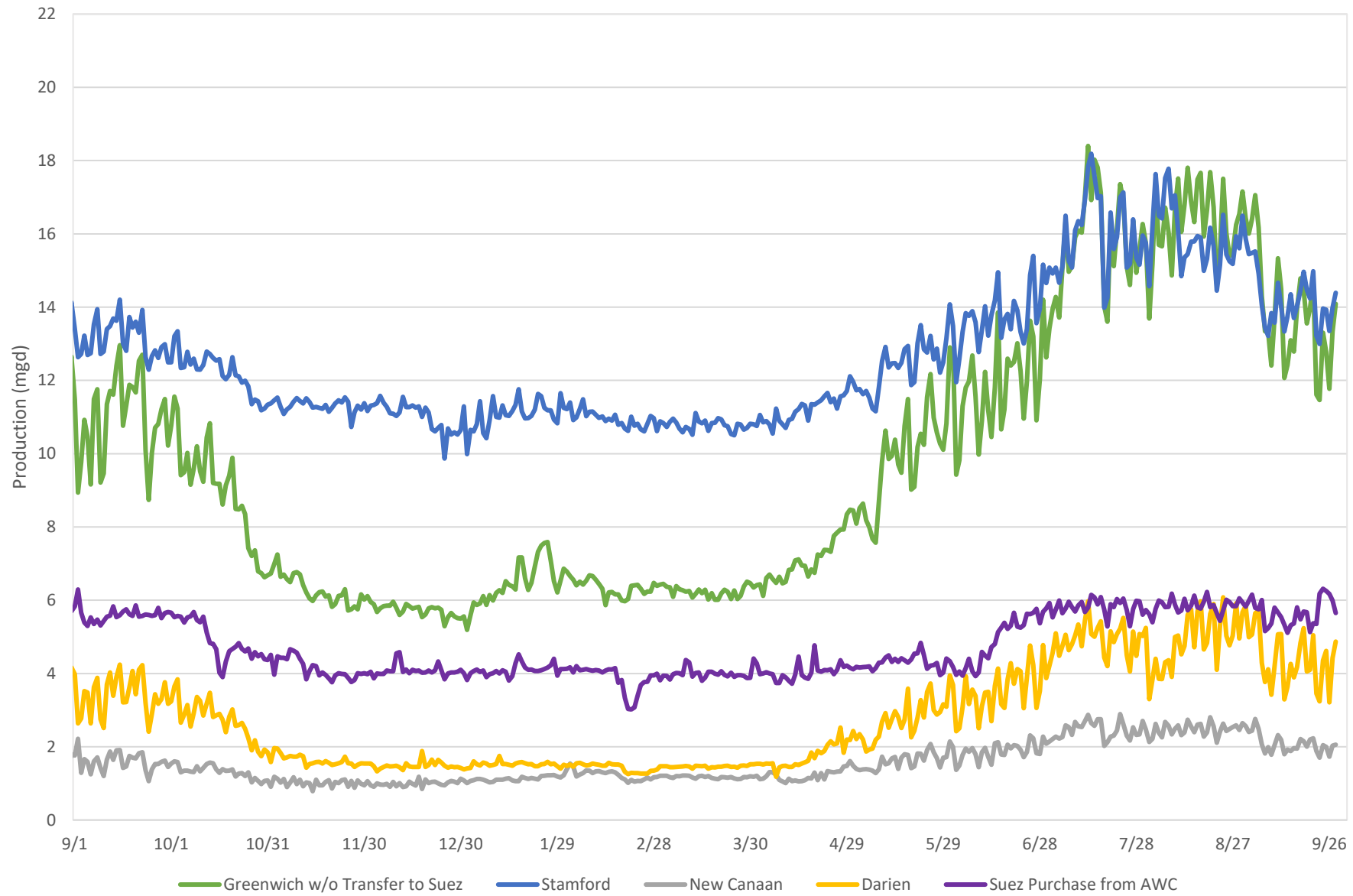


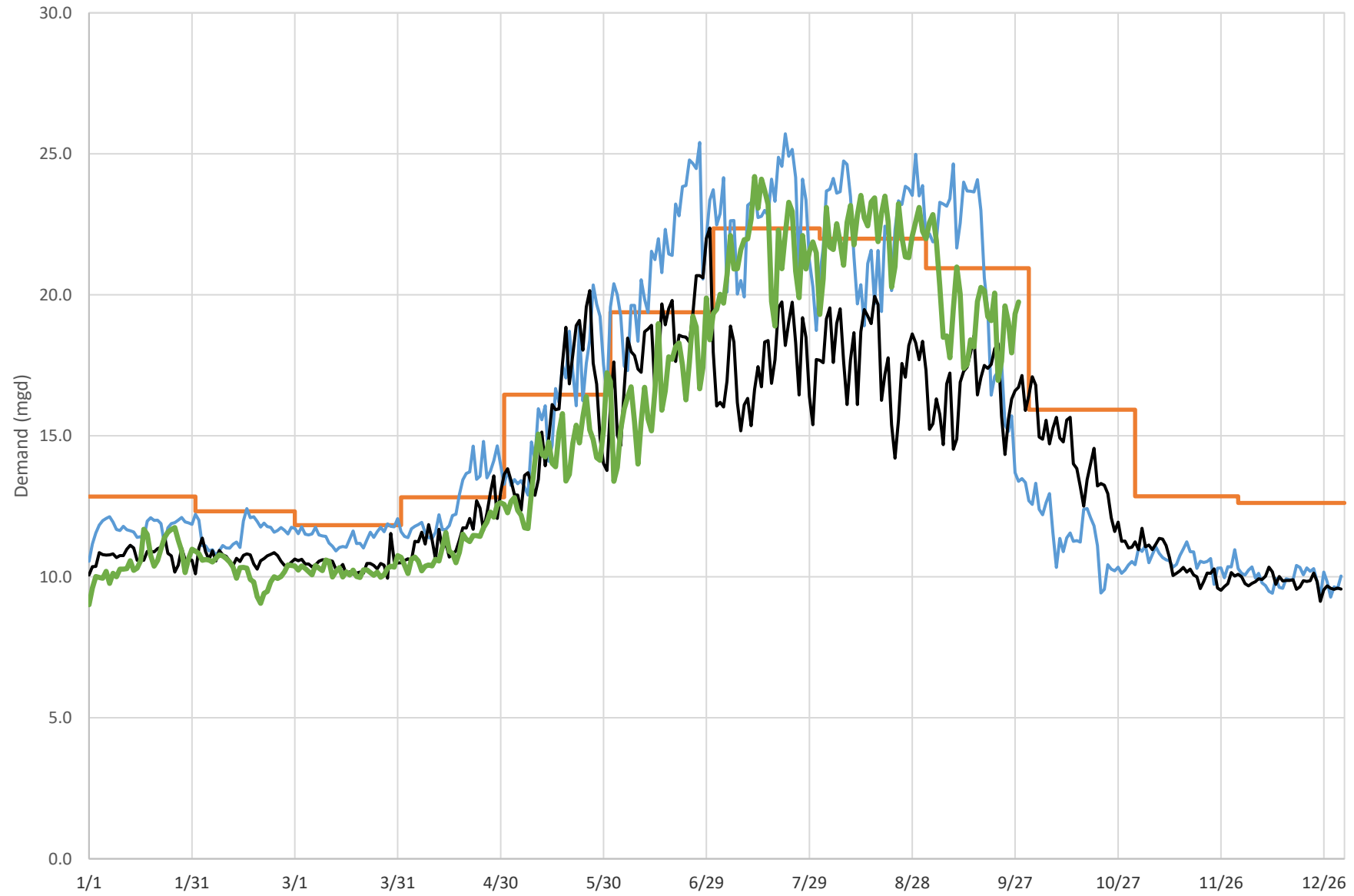


### Regional Water Demands 2022





### Greenwich Demand Summary

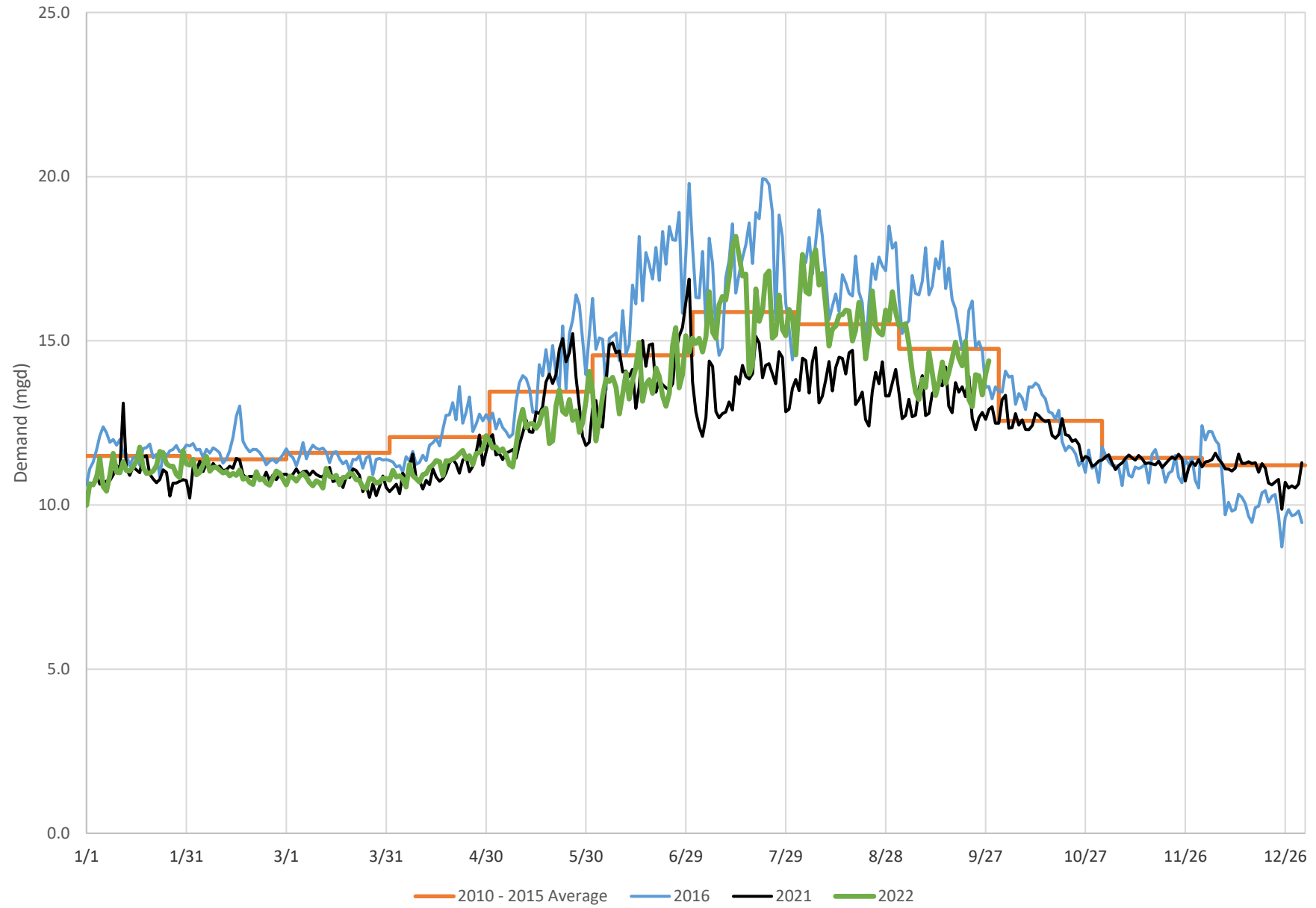


Includes transfers to Suez

— 2010 - 2015 Average — 2016 — 2021 — 2022

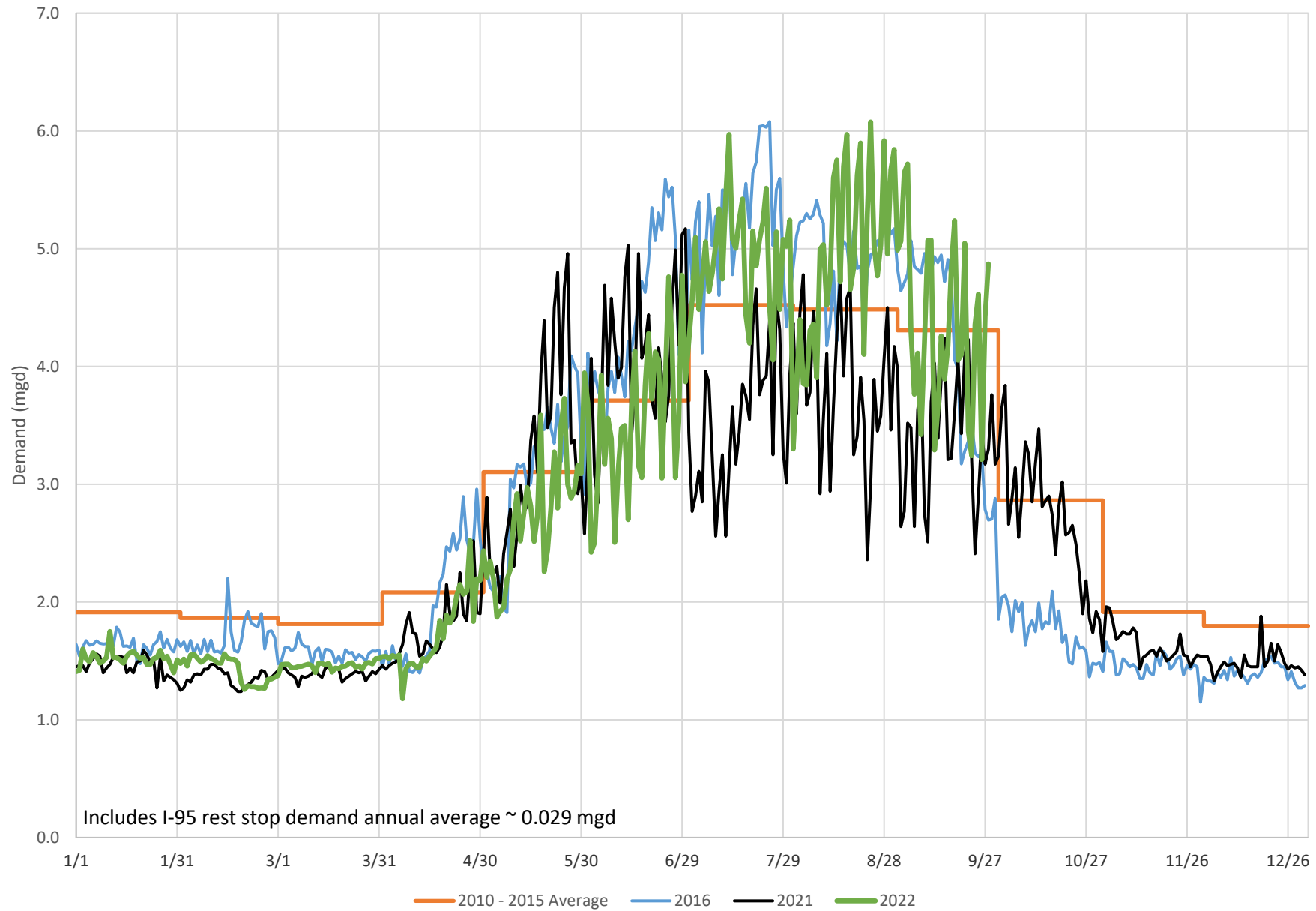


### Stamford Demand Summary



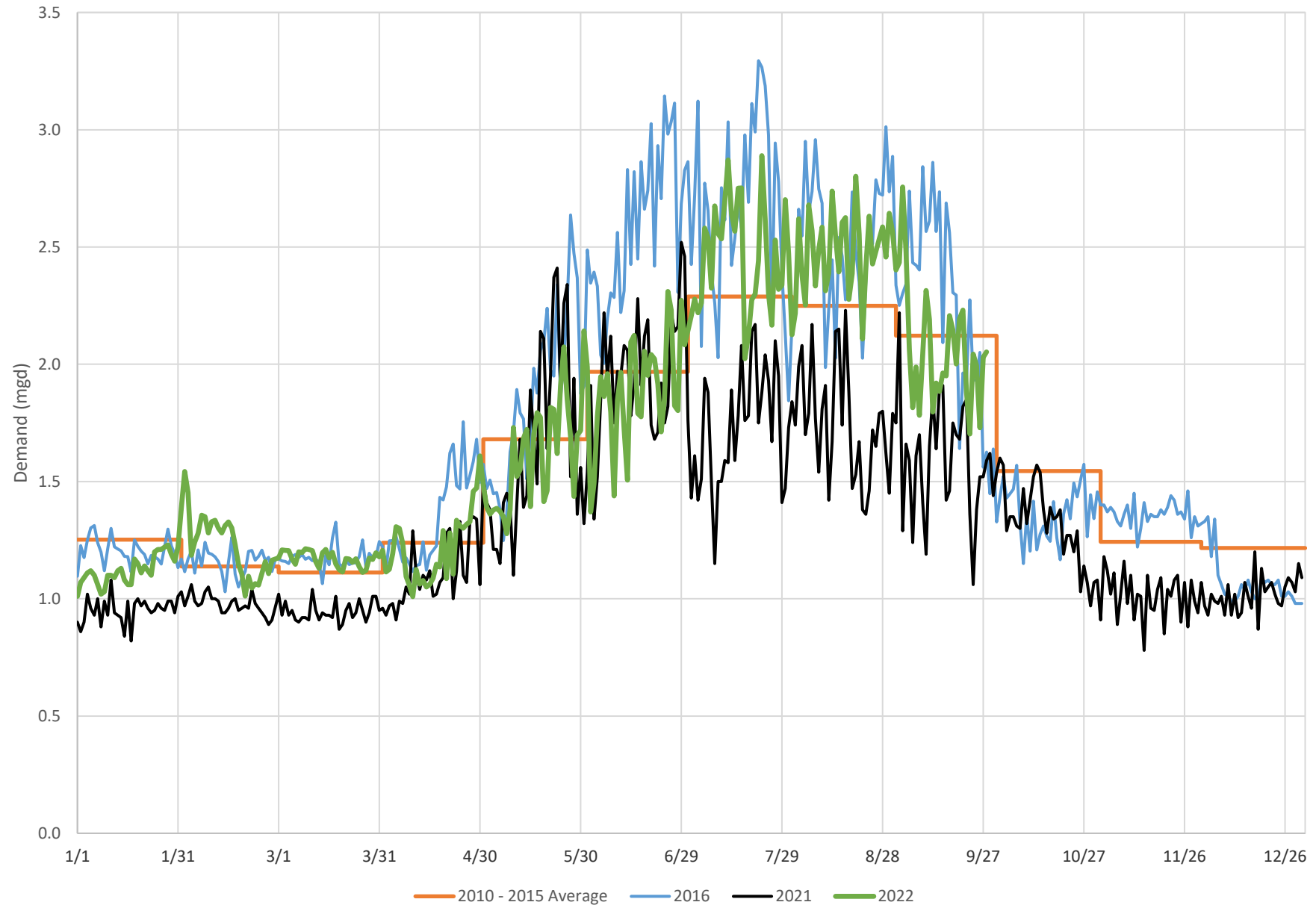


### Darien Demand Summary



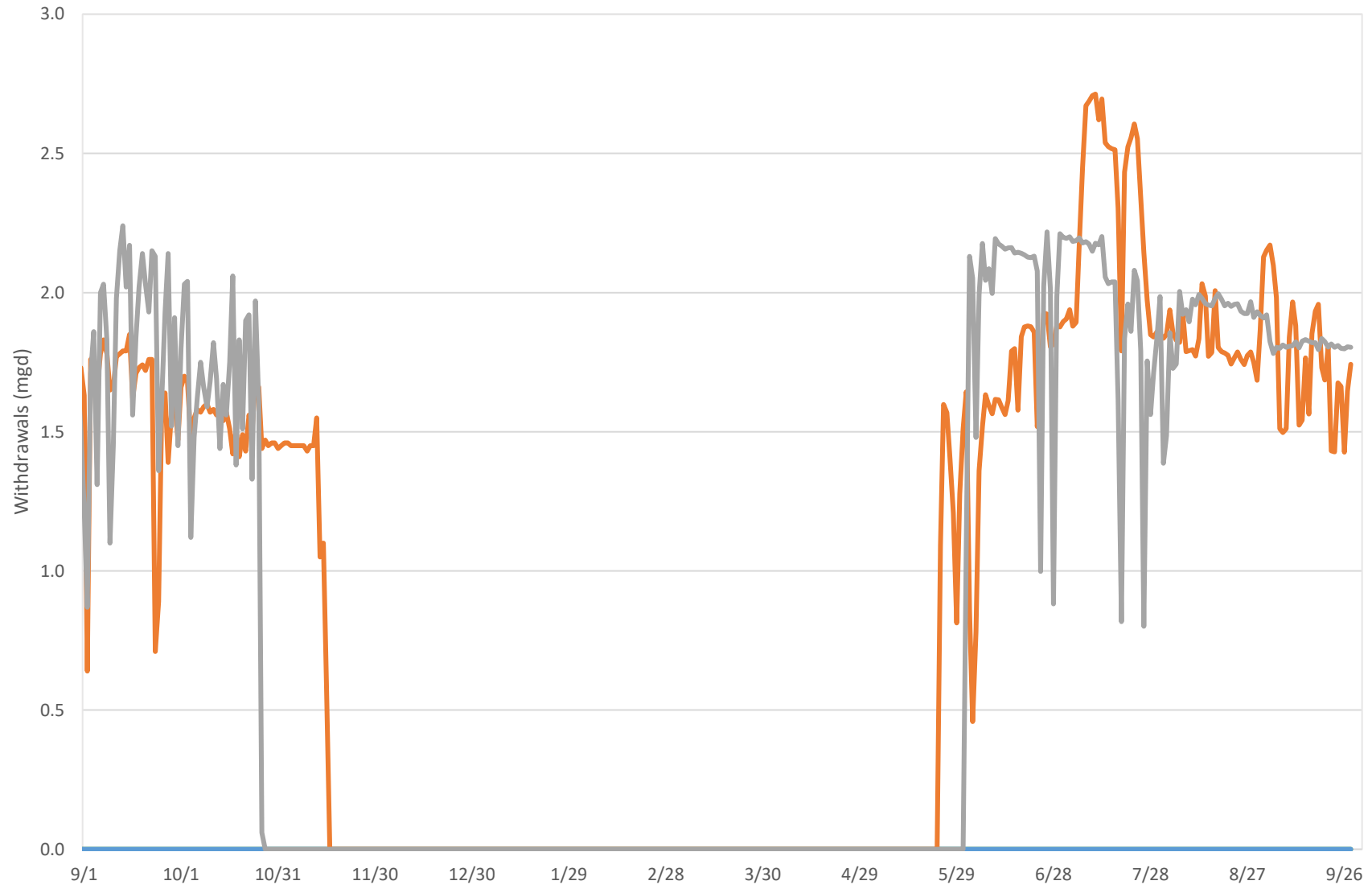


### New Canaan Demand Summary





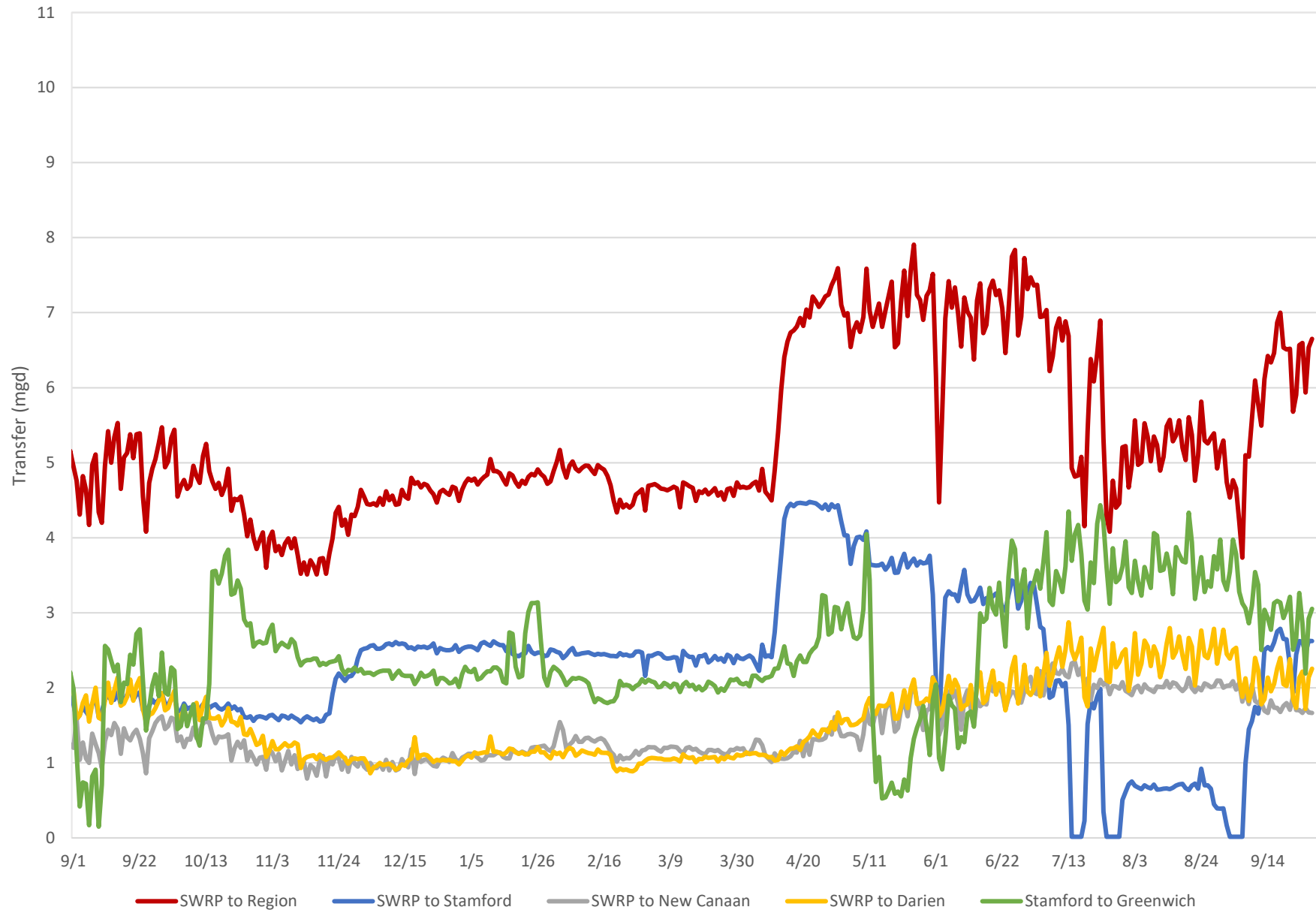
### Well Withdrawals



— Rewak (Darien) — Wire Mill (Stamford) — Canal St (Westport) — Coleytown (Westport)

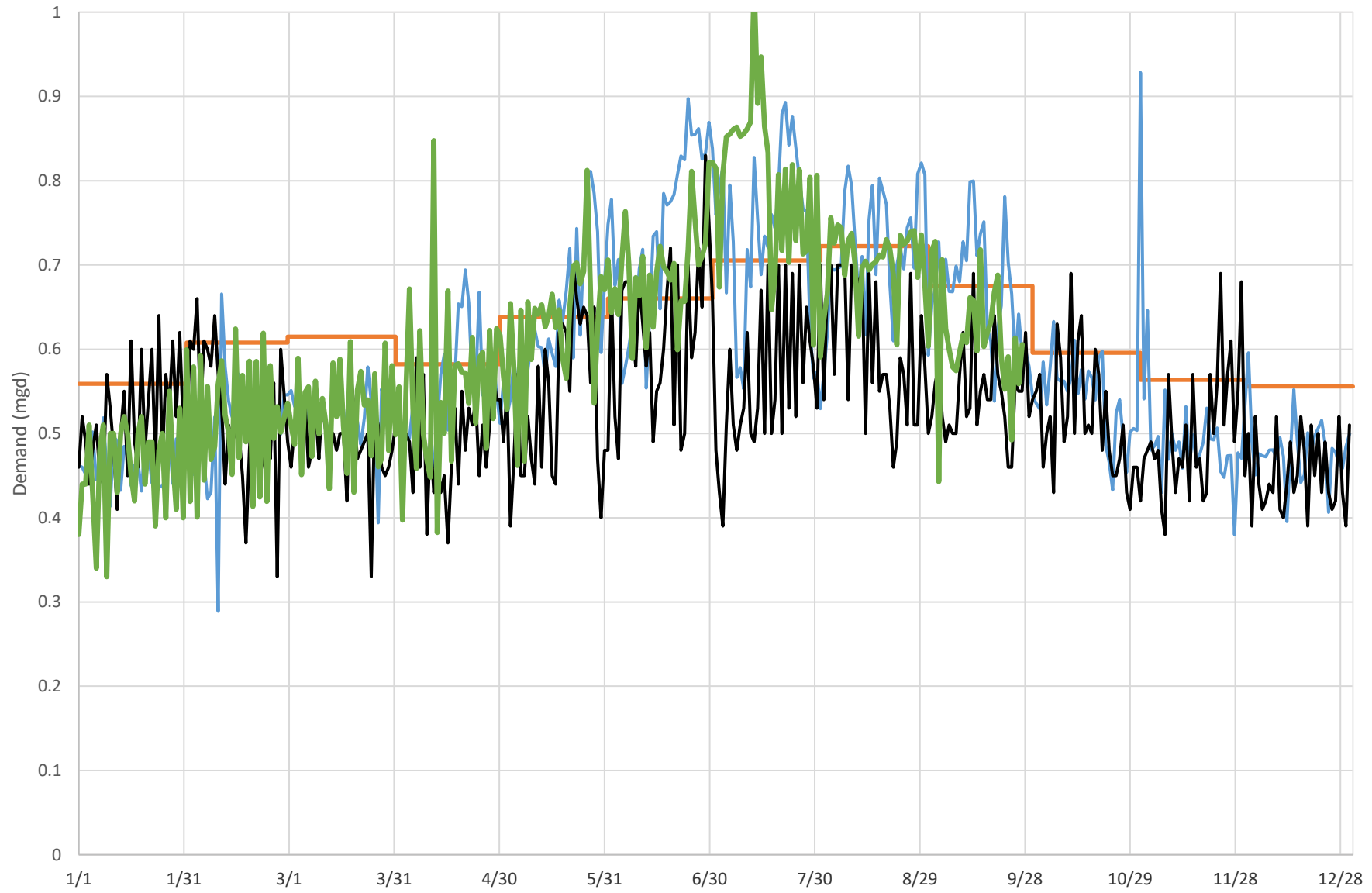


### Regional Water Transfers





### Town of Newtown Demand Summary



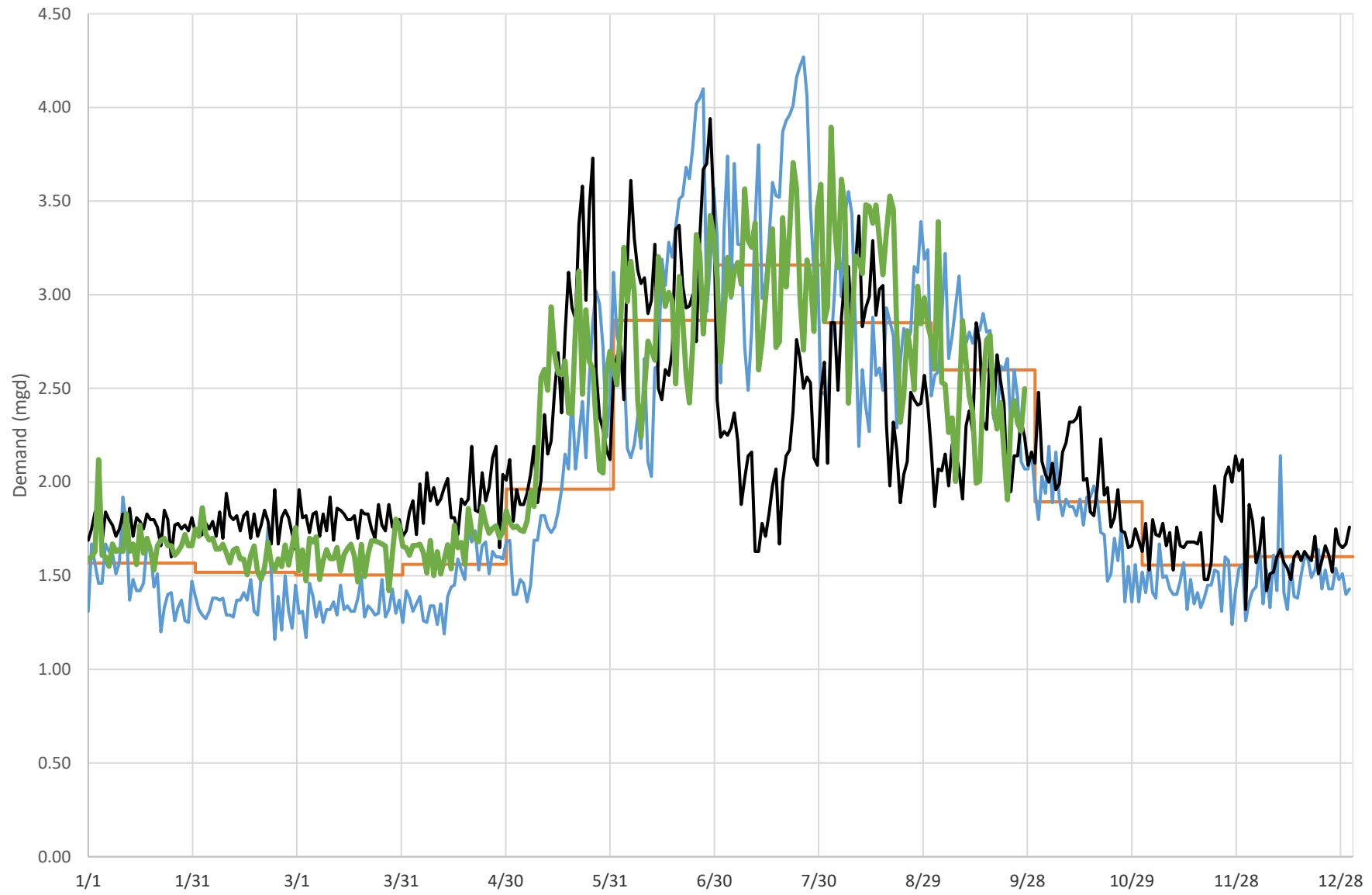
Newtown + Olmstead Systems

— 2013 - 2017 Average    — 2016    — 2021    — 2022  
2013-2017 average corrected for meter inaccuracy





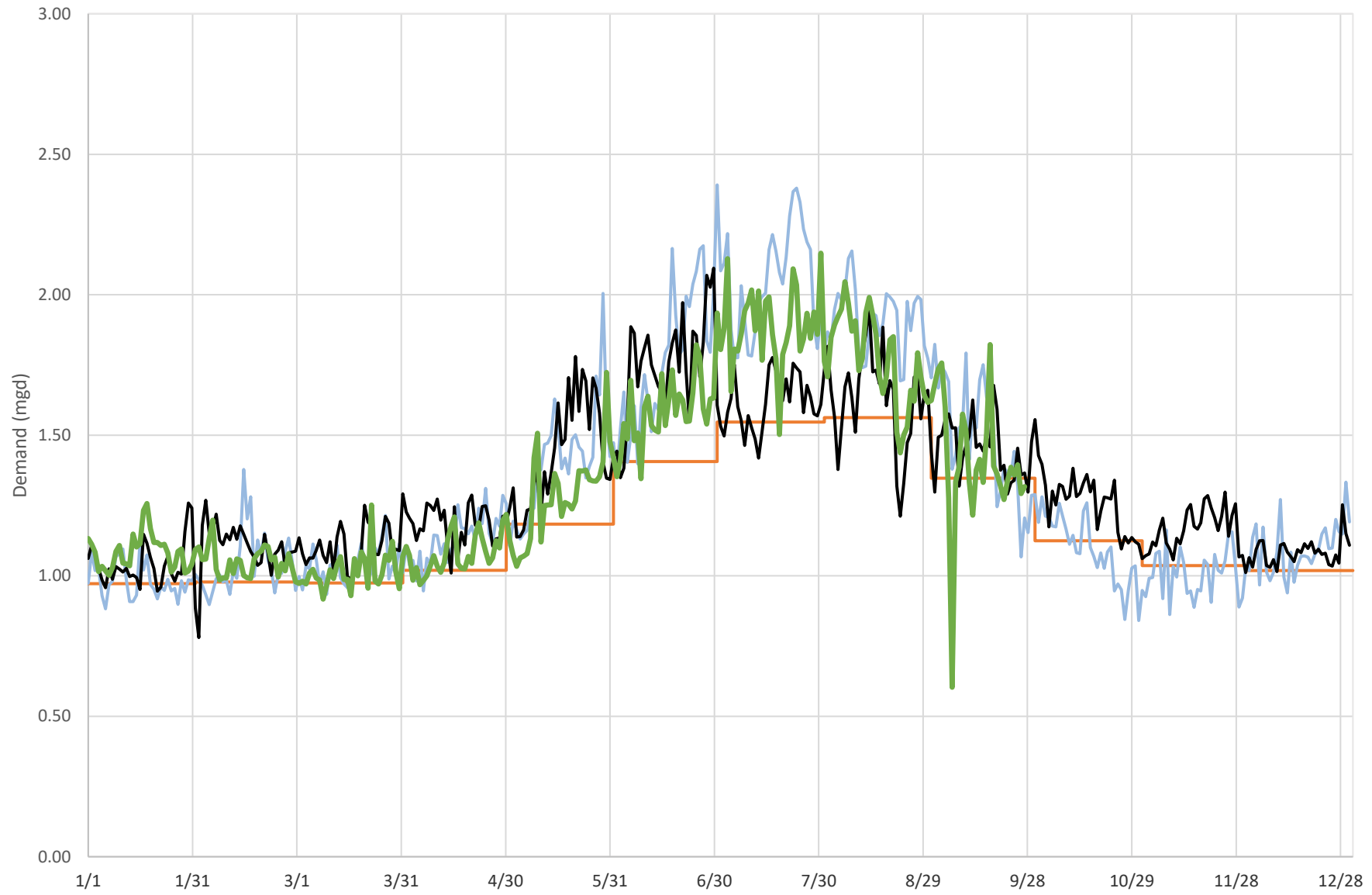
### Simsbury System Demand Summary



Includes Simsbury, Granby and East Granby    — 2016 - 2020 Average    — 2016    — 2021    — 2022



### Mystic System Demand Summary



Includes Stonington and Groton

— 2017 - 2021 Average

— 2016

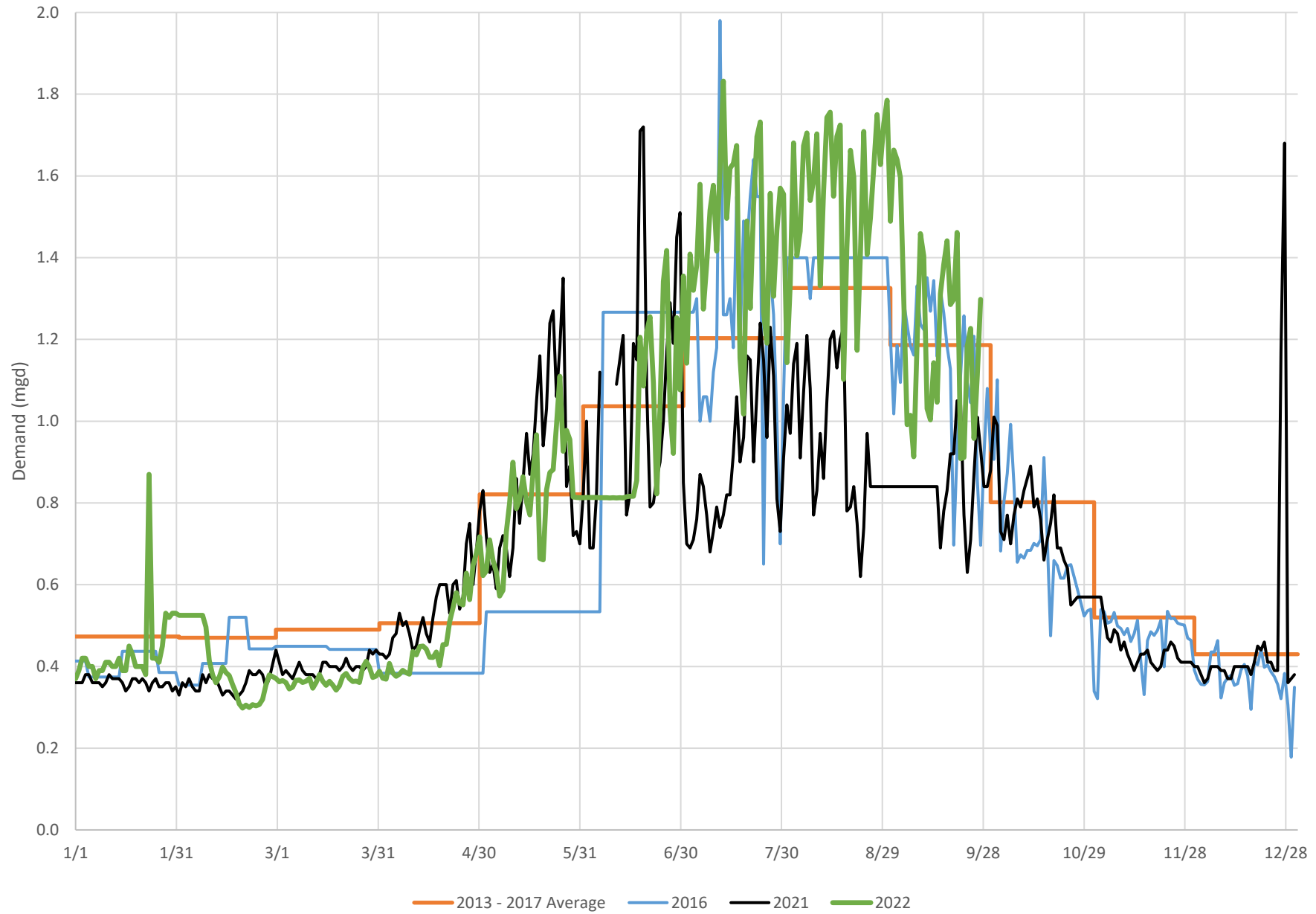
— 2021

— 2022

2017 - 2021 average corrected for meter inaccuracy



### Westport North Ave Service Area Demand Summary





### Fairfield Greenfield Hill Service Area Demand Summary

