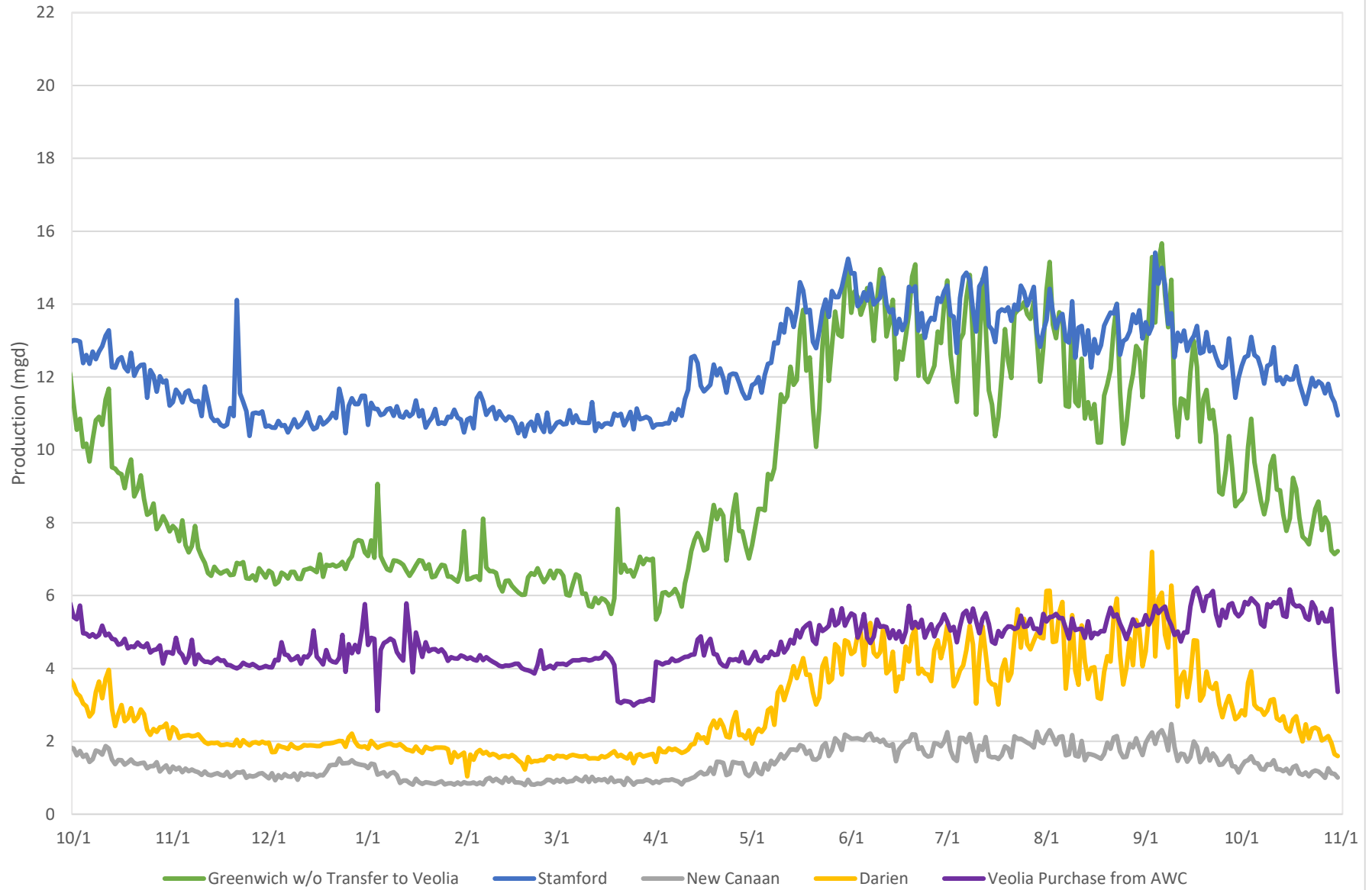


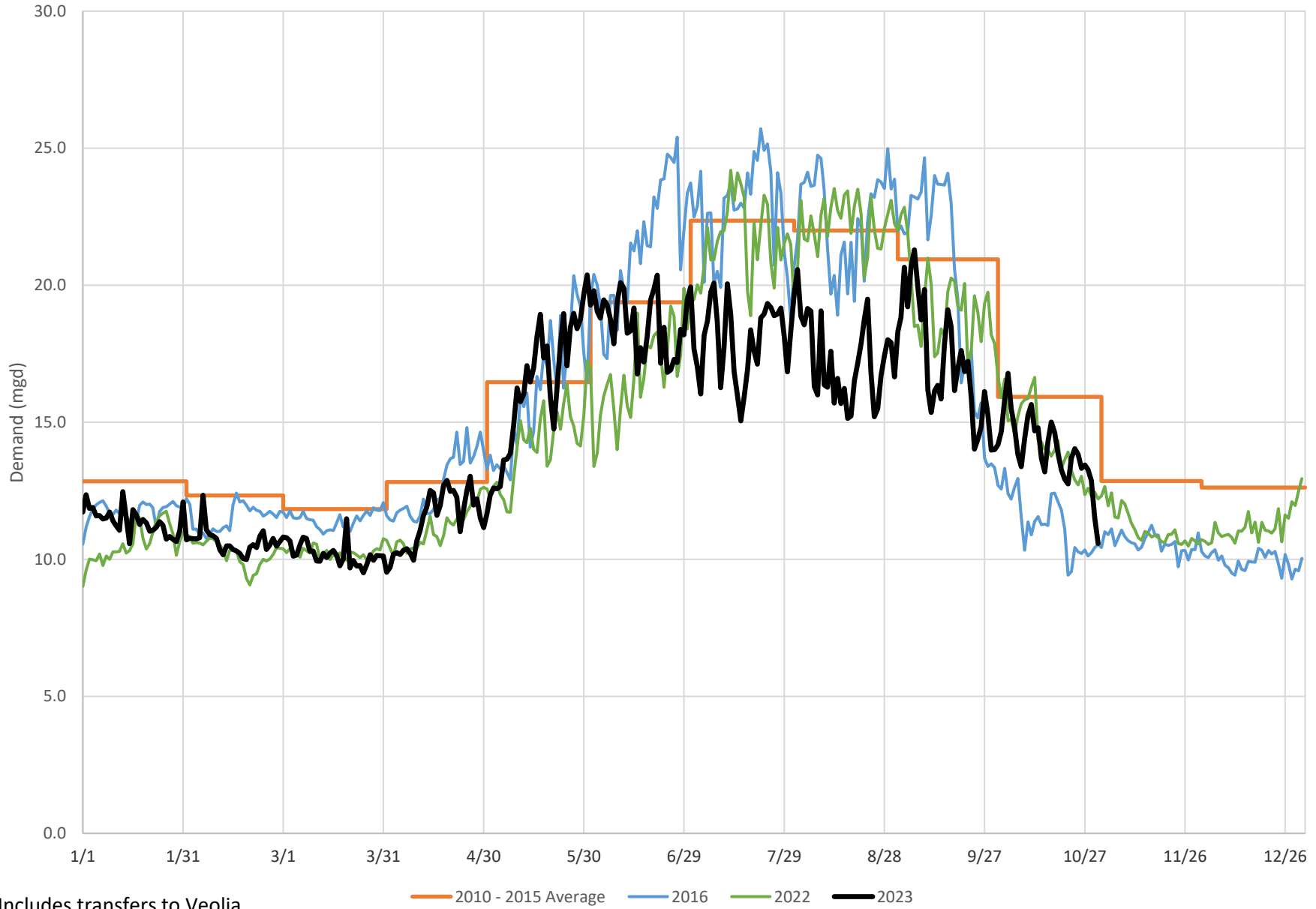


### Regional Water Demands 2022-2023





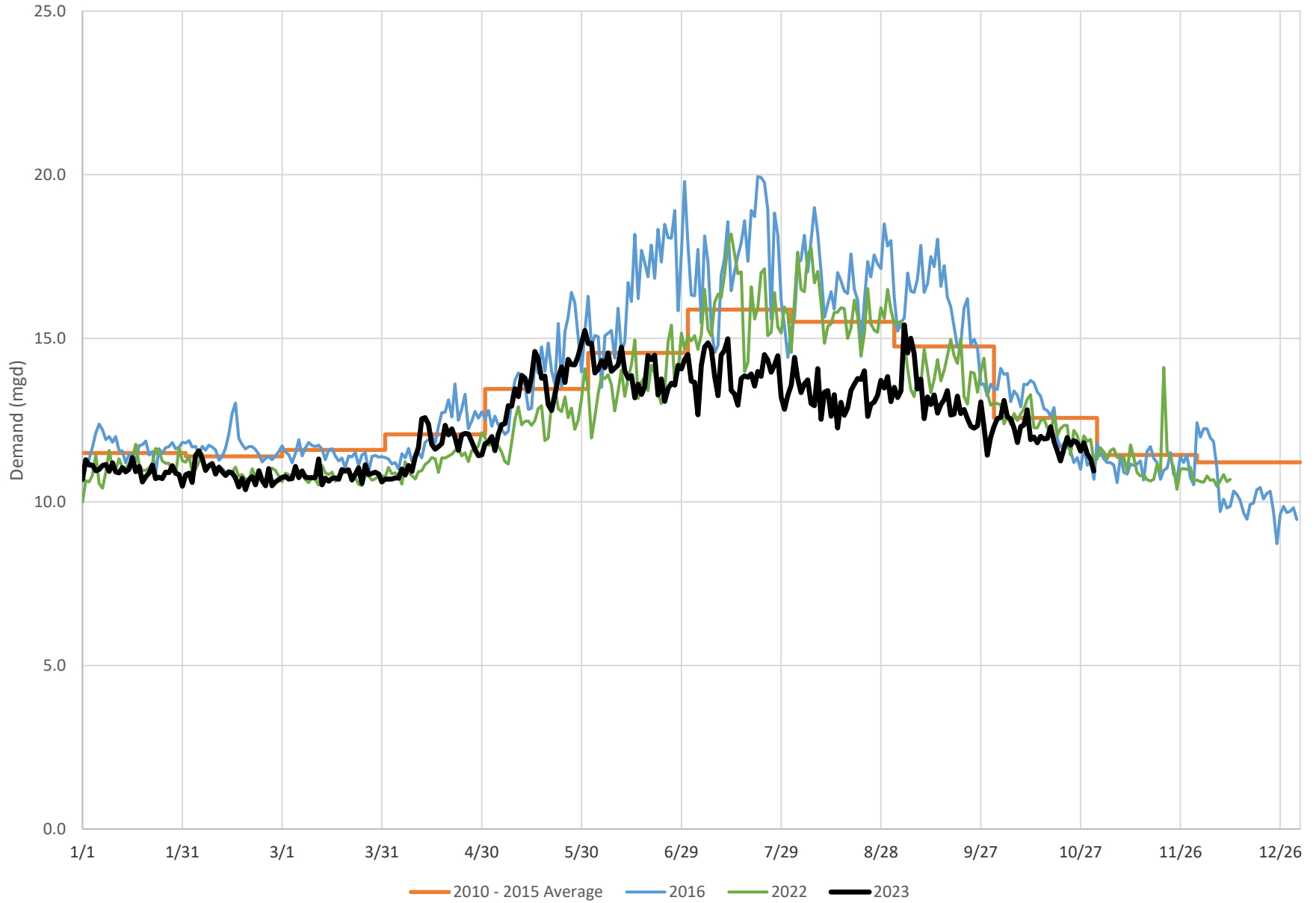
### Greenwich Demand Summary



Includes transfers to Veolia

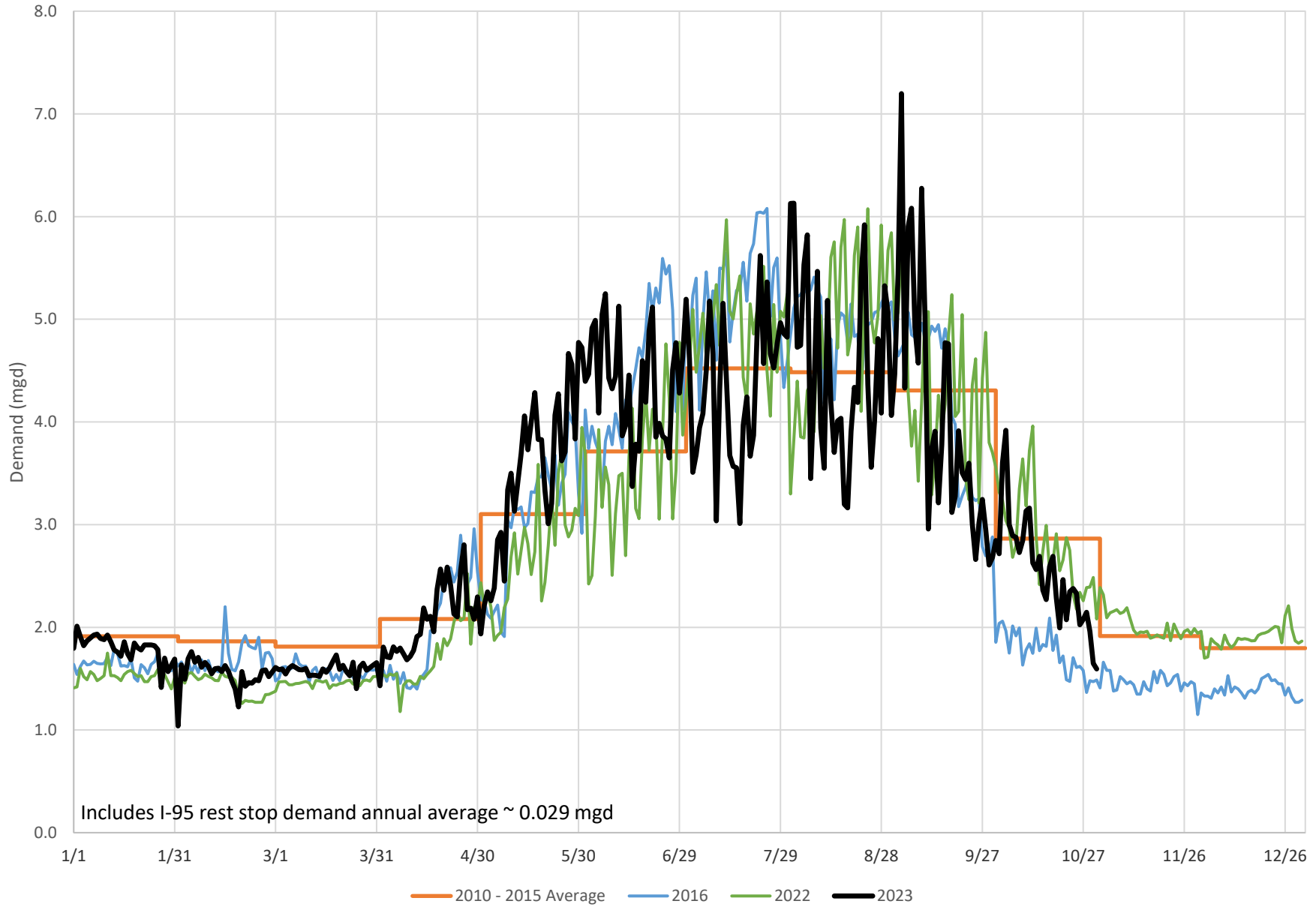


### Stamford Demand Summary



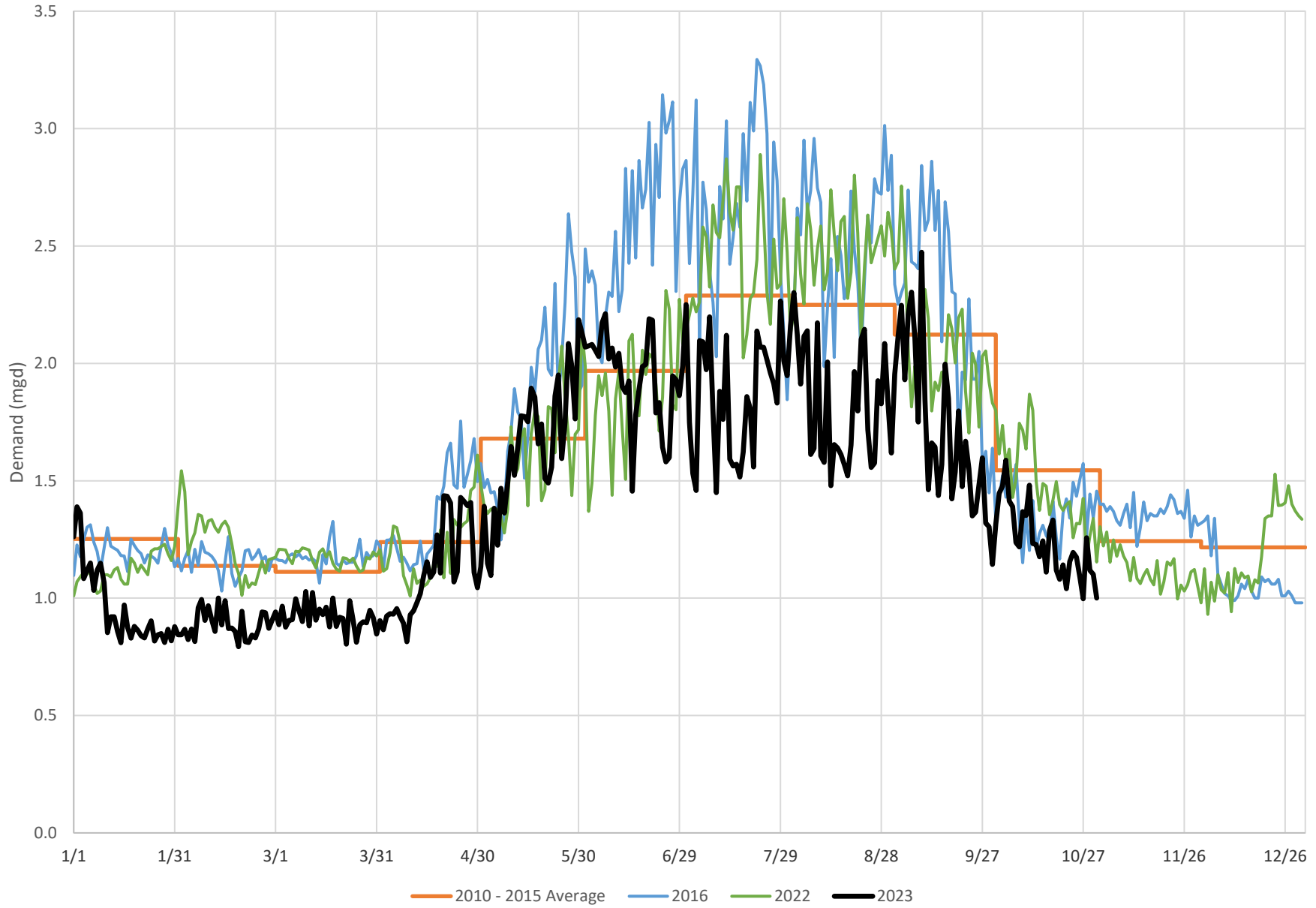


### Darien Demand Summary



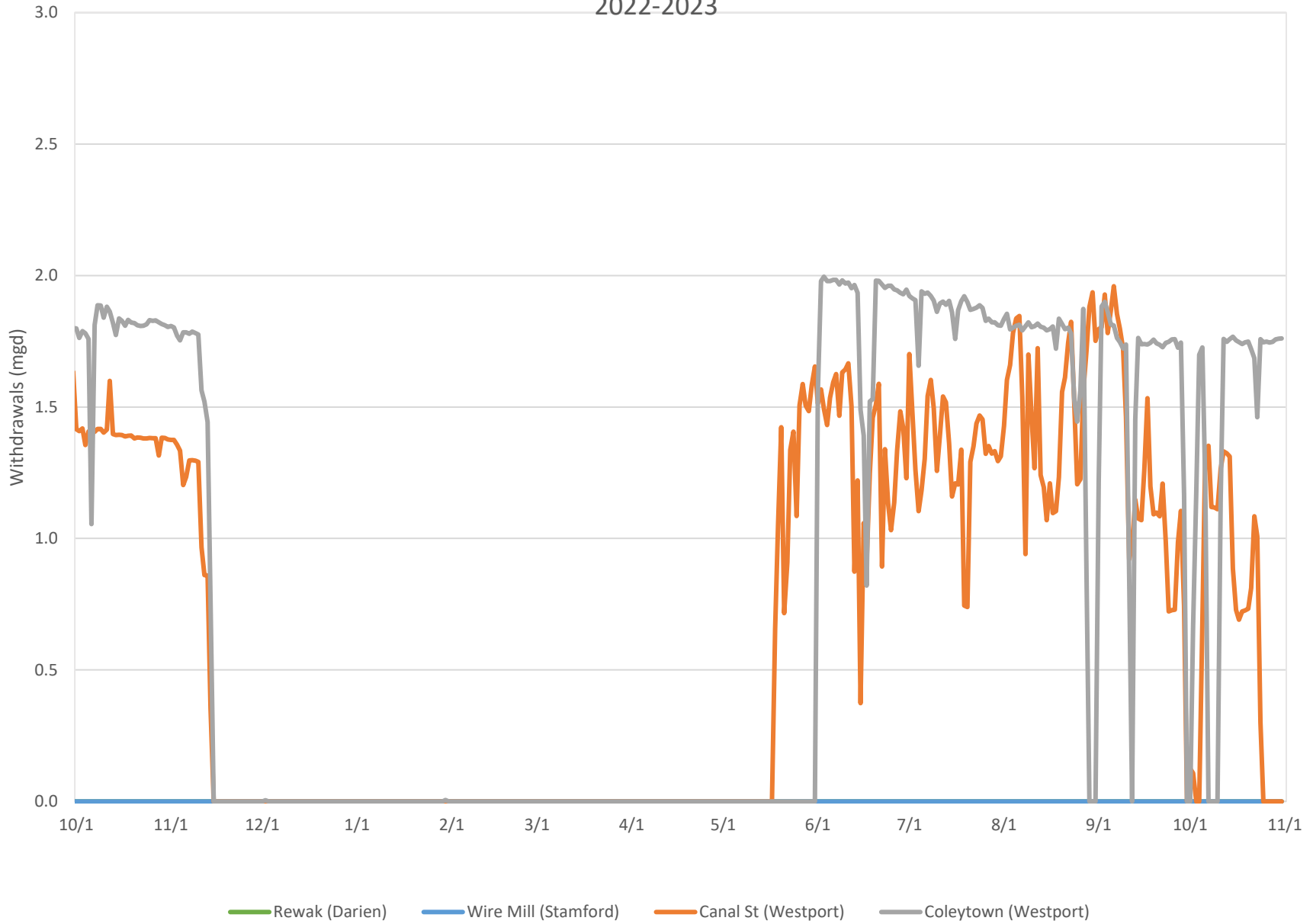


### New Canaan Demand Summary



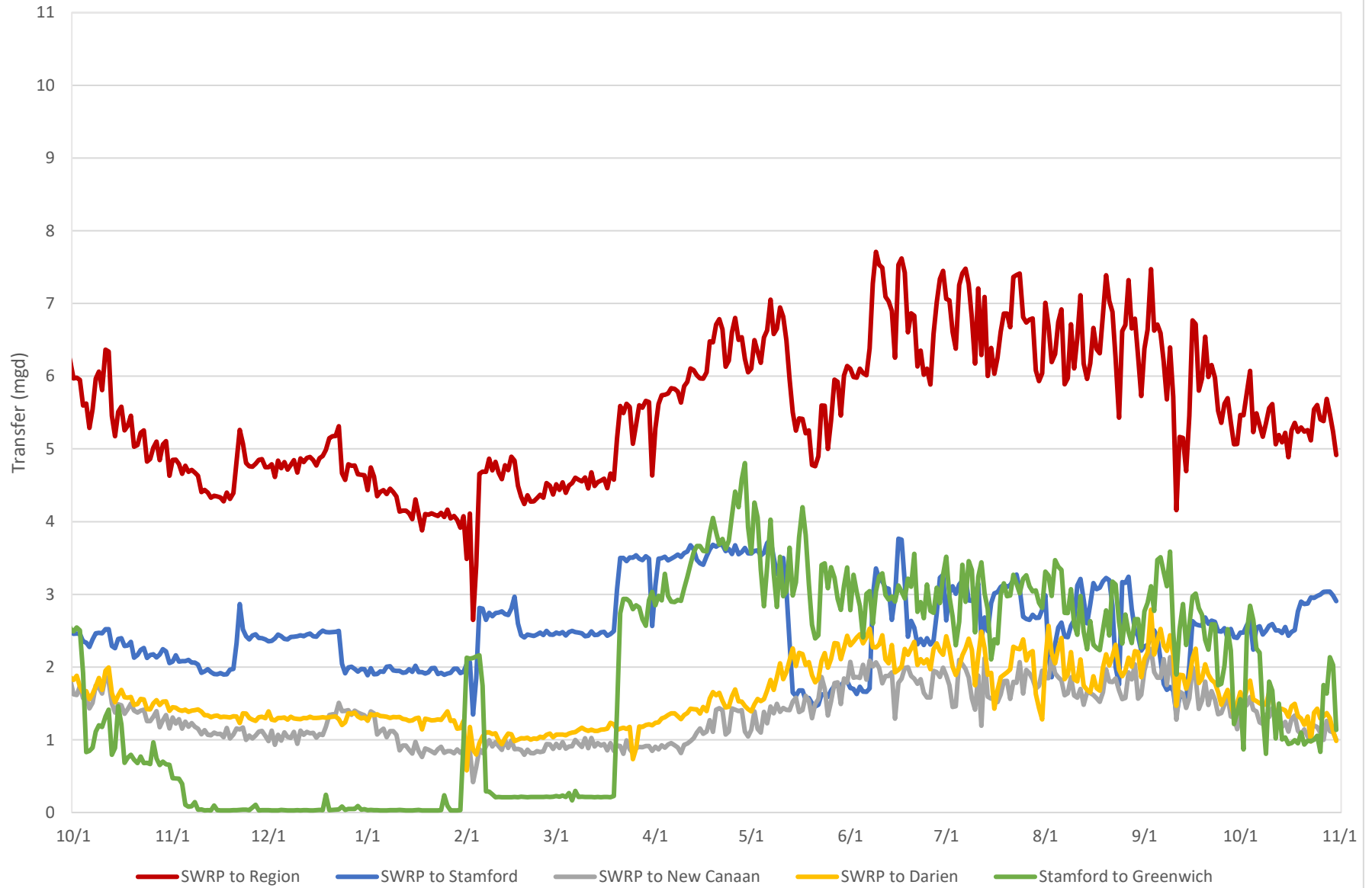


### Well Withdrawals 2022-2023



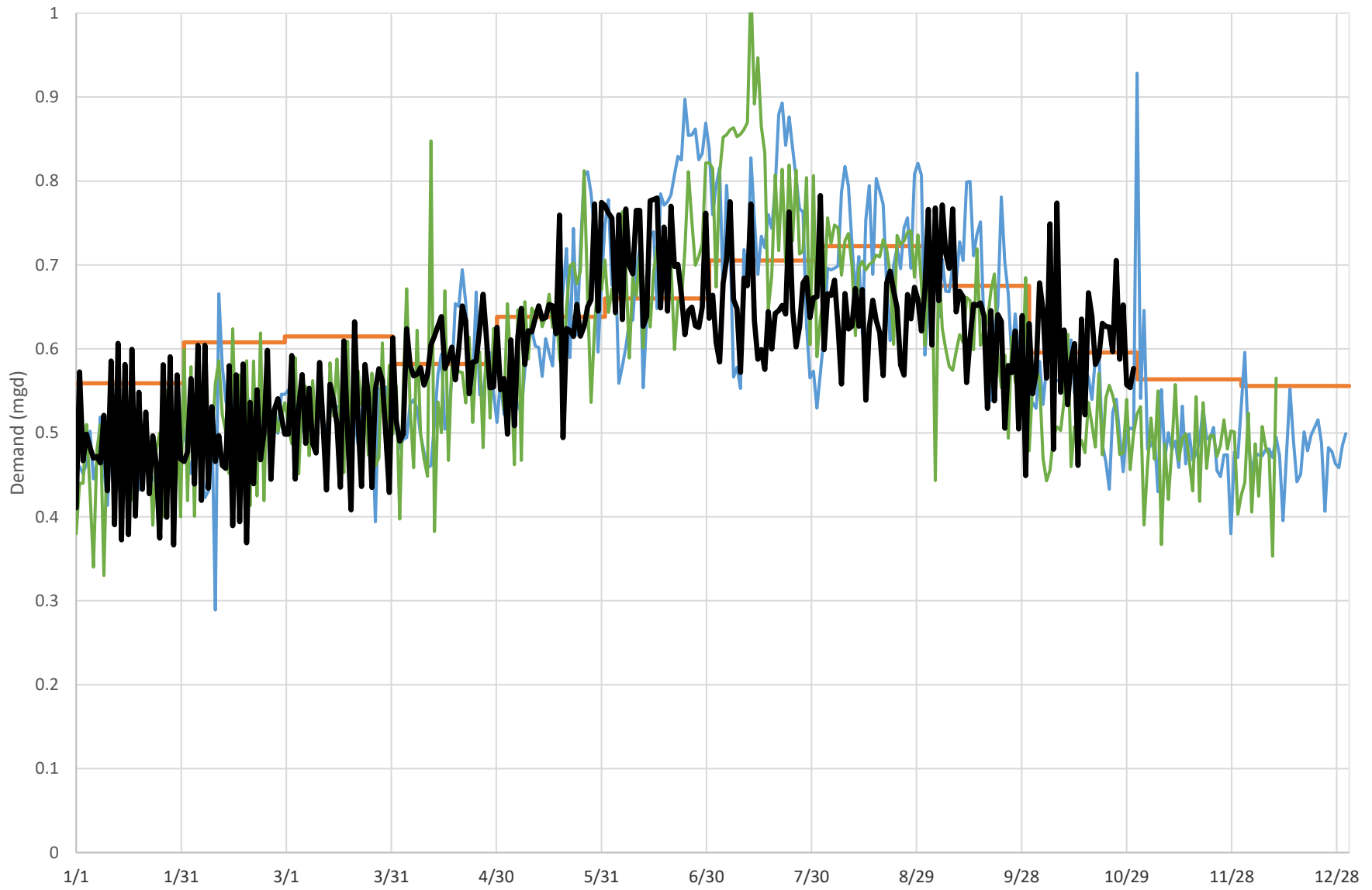


### Regional Water Transfers 2022-2023





### Town of Newtown Demand Summary



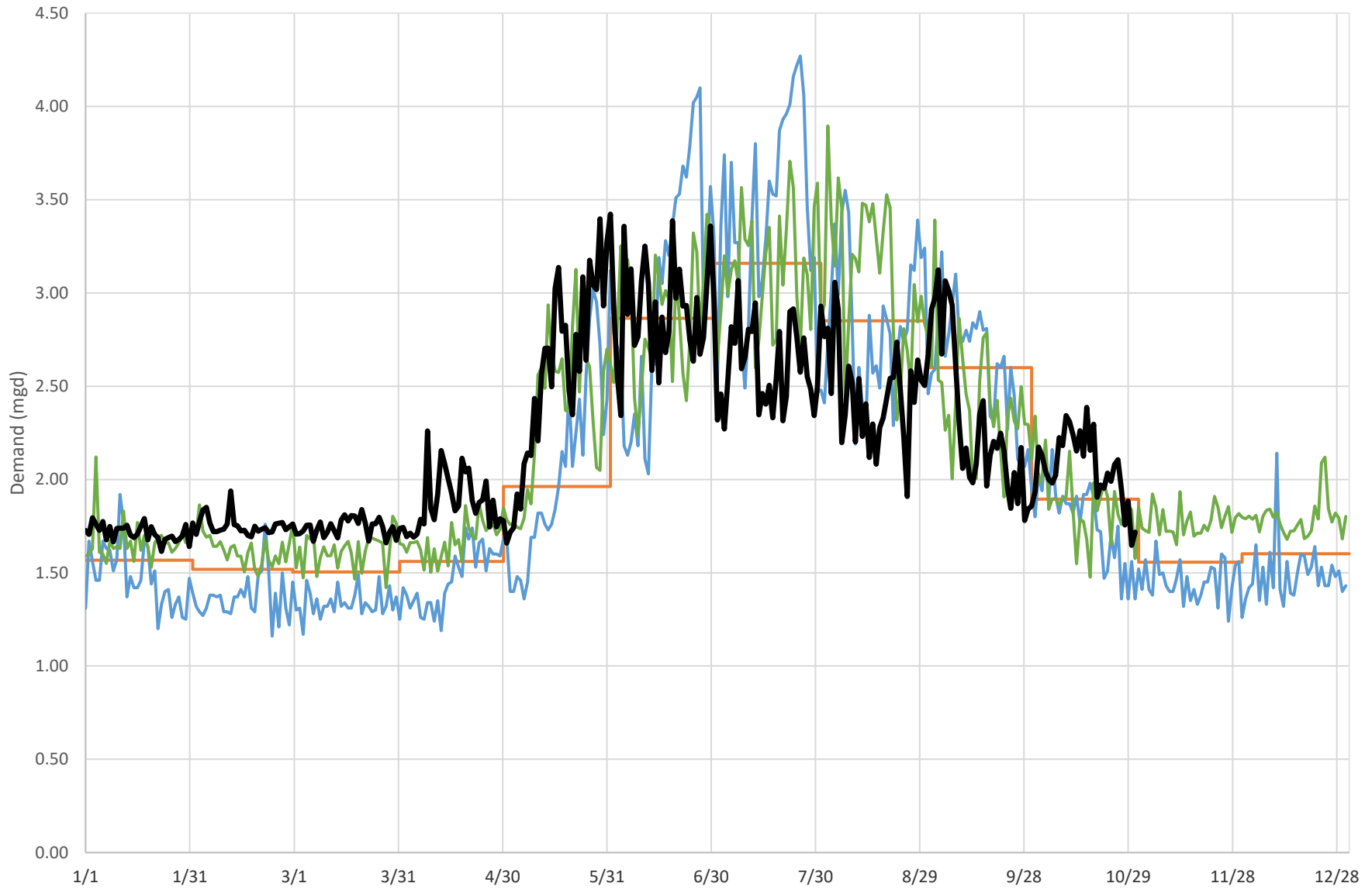
Newtown + Olmstead Systems

— 2013 - 2017 Average — 2016 — 2022 — 2023  
2013-2017 average corrected for meter inaccuracy





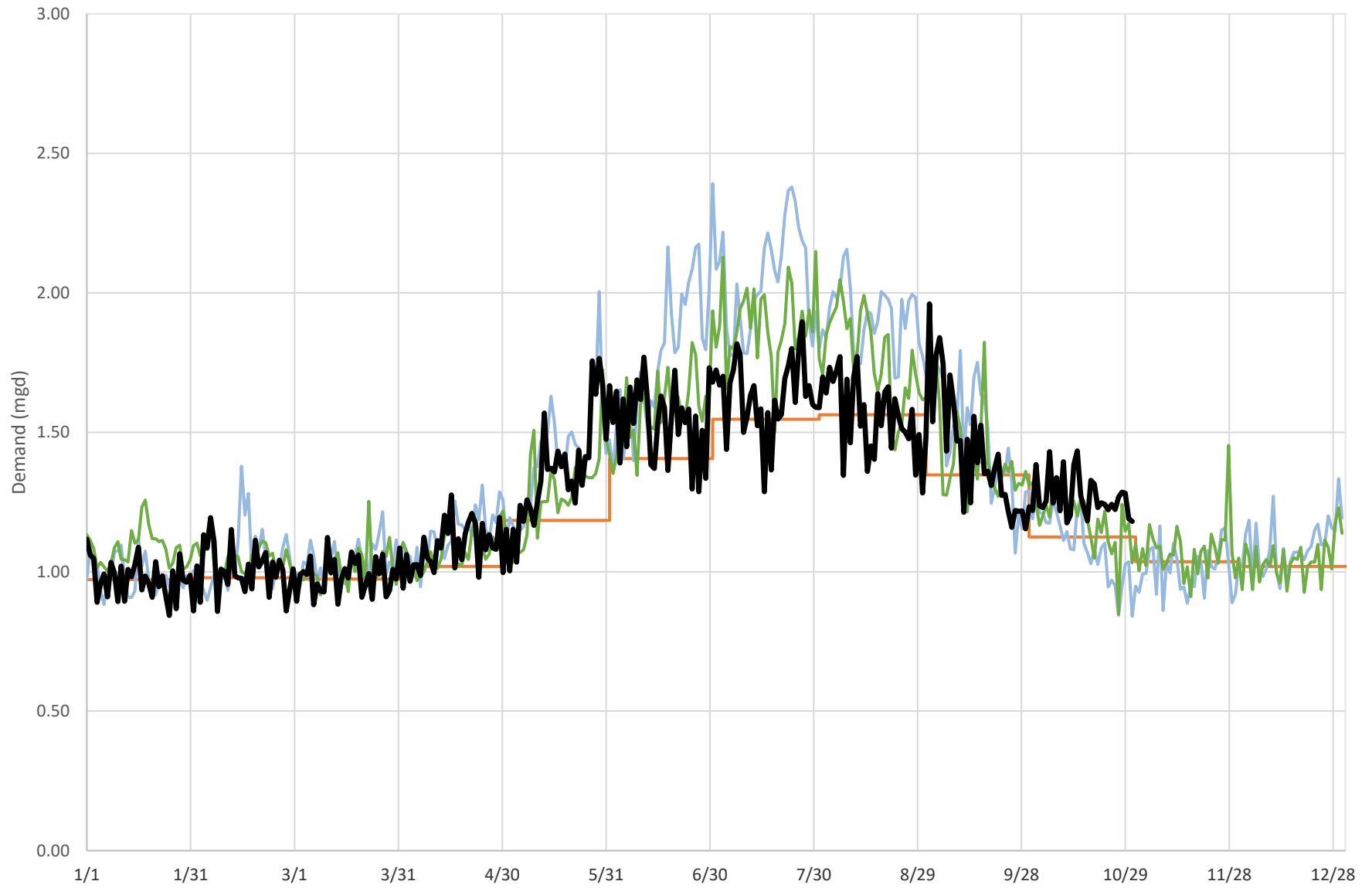
### Simsbury System Demand Summary



Includes Simsbury, Granby and East Granby — 2016 - 2020 Average — 2016 — 2022 — 2023



### Mystic System Demand Summary



Includes Stonington and Groton

— 2017 - 2021 Average

— 2016

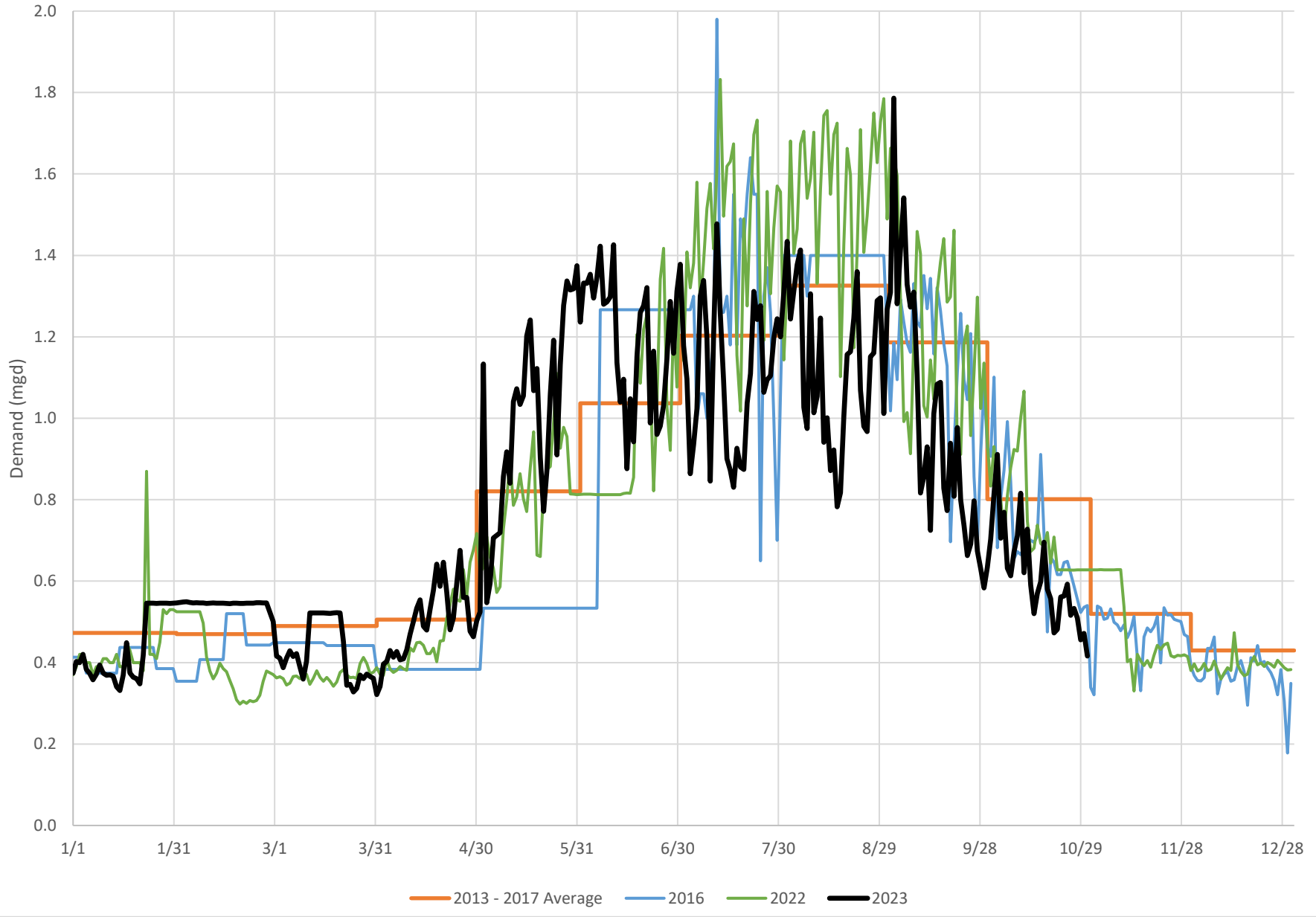
— 2022

— 2023

2017 - 2021 average corrected for meter inaccuracy



### Westport North Ave Service Area Demand Summary





### Fairfield Greenfield Hill Service Area Demand Summary

